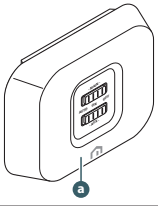


# Unisenza Plus



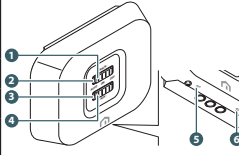
## Receiver

### Pack contents



- a. Receiver
- b. Fixing screw
- c. Fixing wall plug for plate fixing

### Overview

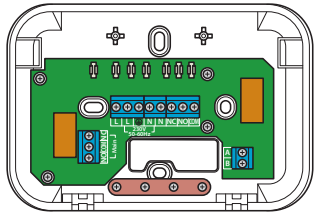


- 1. Slide switch for Main output
- 2. LED for Slide switch for Main output
- 3. LED for Slide switch for Aux output
- 4. Slide switch for Aux output
- 5. Pair button (Short Press to Join to Unisenza Plus Gateway)
- 6. Reset button

### LED functions

Status	Description On/Off System	Description OpenTherm System
Solid Red	Relay Off	OpenTherm Boiler Off
Solid Green	Relay On	OpenTherm On
Solid Orange	Factory reset	Factory reset
Flash Red 1 time then repeat	Pairing mode	Pairing mode
Flash Red 3 times then repeat	Joining to the gateway	Joining to the gateway
Main LED Flash Red or Green 3 times then repeat during normal operations	Lost link with gateway	Lost link with gateway
Flash Red 4 times then repeat (when slide switch position is at Auto)	Lost link with all paired thermostats or E-TRV	Lost link with all paired thermostats or E-TRV

### Terminals Description



	Terminal	Function
230V 50-60Hz (AC Input)	L	Incoming Mains - Live
	⊕	Earthing Terminal
	N	Incoming Mains - Neutral
Main (Volt free Output)	NO	Main relay, Normally Open Contact
	COM	Main relay, Common Contact
	NC	Main relay, Normally Close Contact
AUX (Volt free Output)	NC	Auxiliary relay, Normally Close Contact
	NO	Auxiliary relay, Normally Open Contact
	COM	Auxiliary relay, Common Contact
OpenTherm Interface	A-B	Wire to OpenTherm Boiler

### System Type Selection with DIP switch

Application	Output Controls			
	Main relay	Aux relay	OpenTherm	DIP Switch
1 Heating only (On/Off or OpenTherm)	Heat	Sync with Main	OT/+ (when connected)	ON OFF
2 Heat/Cool 2-pipe system	Heat/Cool	Sync with Main	-	ON OFF
3 Heat/Cool 4-pipe system	Heat	Cool	-	ON OFF
4 Central Heating plus Domestic Hot Water - Supports S-Plan and Y-Plan wiring	Heat	Domestic Hot Water	-	ON OFF
5 Dual Zone Controls	Zone 1 Heat/Cool	Zone 2 Heat/Cool	-	ON OFF

### Wiring diagrams

**Volt-free Combi boiler Control (Application 1)**

**OpenTherm boiler Control (Application 1)**

**Heat/Cool 2-pipe Zone Valve Control (Application 2)**

**Heat/Cool 4-pipe Zone Valves Control (Application 3)**

**Central Heating and DHW - 230V switching S Plan (Application 4)**

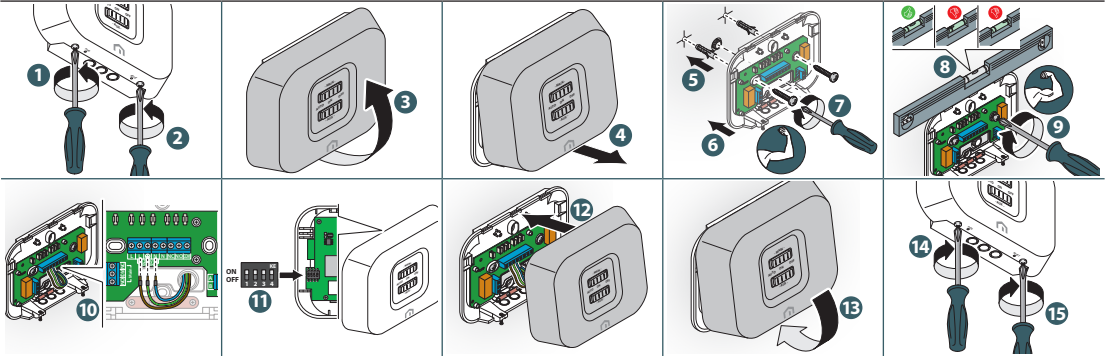
**Central Heating and DHW - 230V switching Y Plan (Application 4)**

**Dual zone heating - Volt-free Combi boiler (Application 5)**

**Dual zone Heat/Cool (2-pipe system) (Application 5)**

**Dual zone heating - 230V Switching boiler (Application 5)**

### Installation



### Use

Main slide switch	Position	Action On/Off System	Action OpenTherm System	Aux slide switch	Position	Action On/Off System	Action OpenTherm System
	AUTO	The output is controlled remotely by Unisenza Plus	OpenTherm Control Setpoint		AUTO	The output is controlled remotely by Unisenza Plus	No function
	ON	The output is always On	OpenTherm max CH water Setpoint		ON	The output is always On	No function
	OFF	The output is always Off	OpenTherm boiler off (heat demand disabled)		OFF	The output is always Off	No function