

UNDERFLOOR  
HEATING



UNDERFLOOR  
HEATING

MANIFOLD



## CONTROLS



TOUCH2 WiFi

MYSON FLOORTEC underfloor heating offer a full range of quality controls to ensure that you get the most out of our underfloor heating systems. Our controls are designed by our heating experts to meet the requirements of our customers and will perfectly complement our systems.

Controls are an essential part of every underfloor heating system. Each system requires at least one manifold, control centre, wiring centre and thermostat. MYSON FLOORTEC supply quality manifolds, isolating and blending valves and an A-rated pump. MYSON FLOORTEC also supplies wiring centres as well as a range of thermostats from basic digital thermostats to WiFi enabled touch controls.

UNDERFLOOR HEATING

UNDERFLOOR HEATING

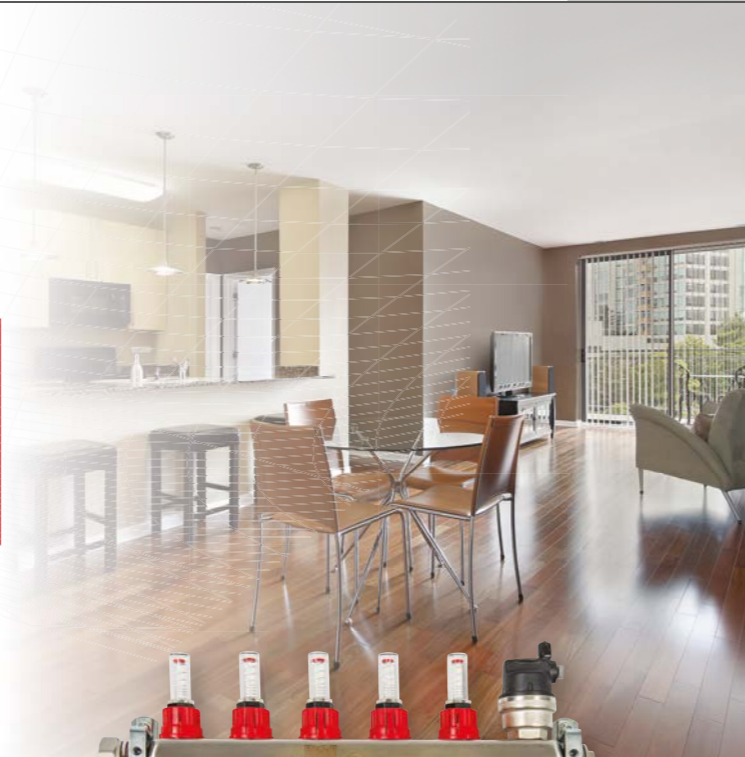
# PREMIUM MANIFOLDS

The MYSON FLOORTEC underfloor heating manifold is the central point to most underfloor heating systems. The manifold is responsible for distributing mixed water provided by the manifold control centre to each heating circuit.

MYSON have introduced their premium manifold as part of the complete bespoke system that is more compact, easier to use, and comes complete with all fittings and fixtures.

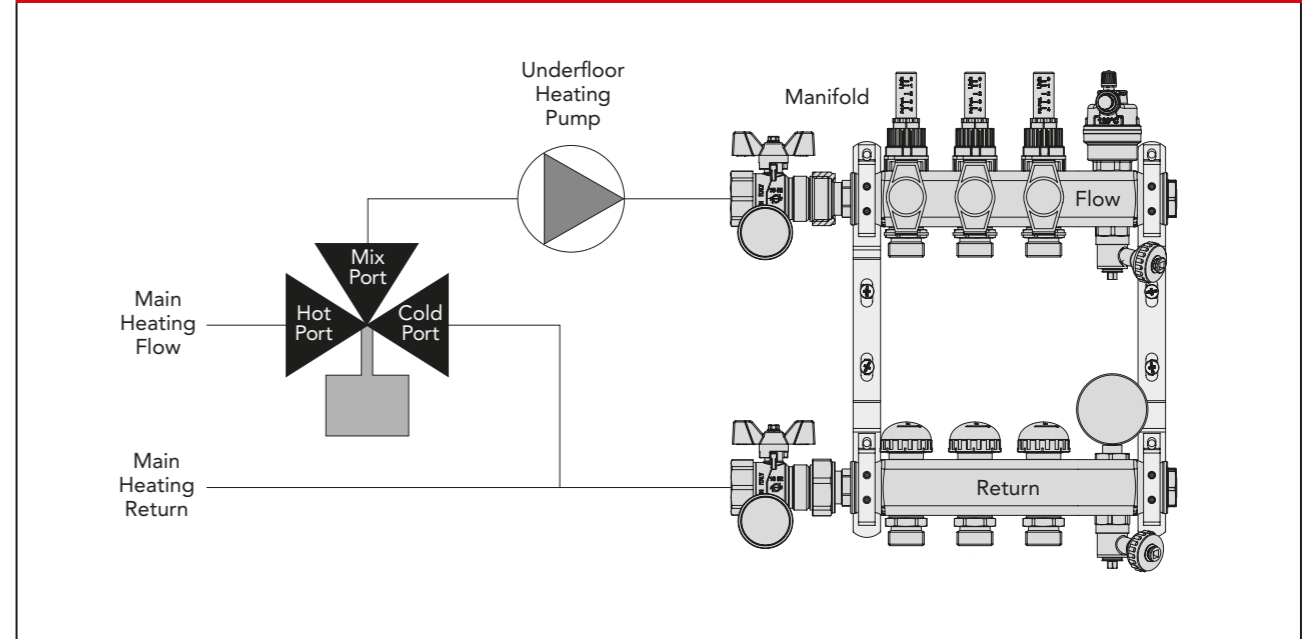
It is neat and compact in size and has a number of features and benefits that make it one of the leading manifolds on the market.

An instructional video for flow meters is available at [www.myson.co.uk/premiummanifold](http://www.myson.co.uk/premiummanifold)



99305PR

## MIXED CIRCUIT FLOW DIAGRAM



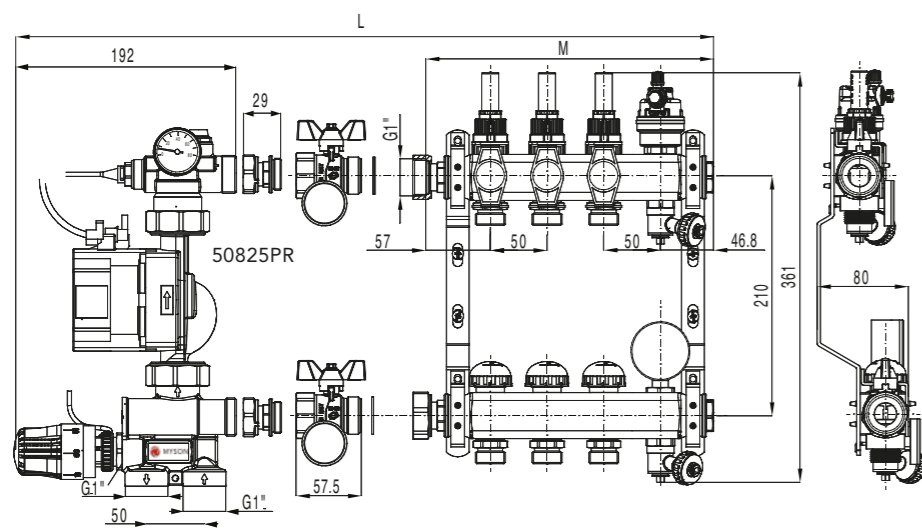
## PREMIUM MANIFOLDS

Description	Order Code
2 port Premium Manifold	99302PR
3 port Premium Manifold	99303PR
4 port Premium Manifold	99304PR
5 port Premium Manifold	99305PR
6 port Premium Manifold	99306PR
7 port Premium Manifold	99307PR
8 port Premium Manifold	99308PR
9 port Premium Manifold	99309PR
10 port Premium Manifold	99310PR
11 port Premium Manifold	99311PR
12 port Premium Manifold	99312PR
Pipe Bend Support 14-17mm	50070
Pipe Bend Support 18-23mm	50071
3/4" Blanking Cap	53084

## ADAPTORS

Manifold Coupling for 17 x 2mm Pex	50114
Straight Coupling for 17 x 2mm Pex	50010
Manifold Coupling for 14 x 2mm Pex	50019
Straight Coupling for 14 x 2mm Pex	50020
Manifold Coupling for 20 x 2mm Pex	50113
Straight Coupling for 20 x 2mm Pex	50011
Manifold Coupling for 16 x 2mm Multi-layer	53033
Straight Coupling for 16 x 2mm Multi-layer	53032
15mm Copper Adaptor	40213
14mm x 1/2" Male Iron Adaptor	50115
17mm x 1/2" Male Iron Adaptor	50116
Coupling Central Core	50009
Manifold Coupling for 12 x 2mm Pex	50118
Straight Coupling for 12 x 2mm Pex	50013
1" Straight Swivel Adaptor	99329PR

## PREMIUM MANIFOLD & PUMP PACK - MANIFOLD DIMENSION DETAILS 2-12 PORT



Number of Ports	Manifold Length(M) (±1mm)	Total Length(L) (±1mm)
2	204	454
3	254	504
4	304	554
5	354	604
6	404	654
7	454	704
8	504	754
9	554	804
10	604	854
11	654	904
12	704	954

Pump pack and manifold sold separately.

DELIVERY  
2 - 5 working days.